



Nelson/West Farm

65.12 Acres, more or less located in the Section 23 of Geneseo Township, Henry County,
Illinois

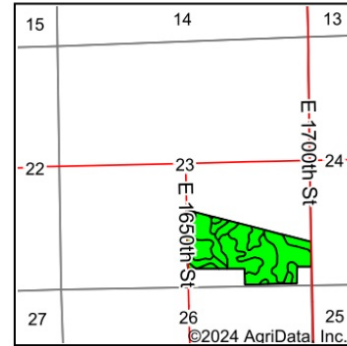
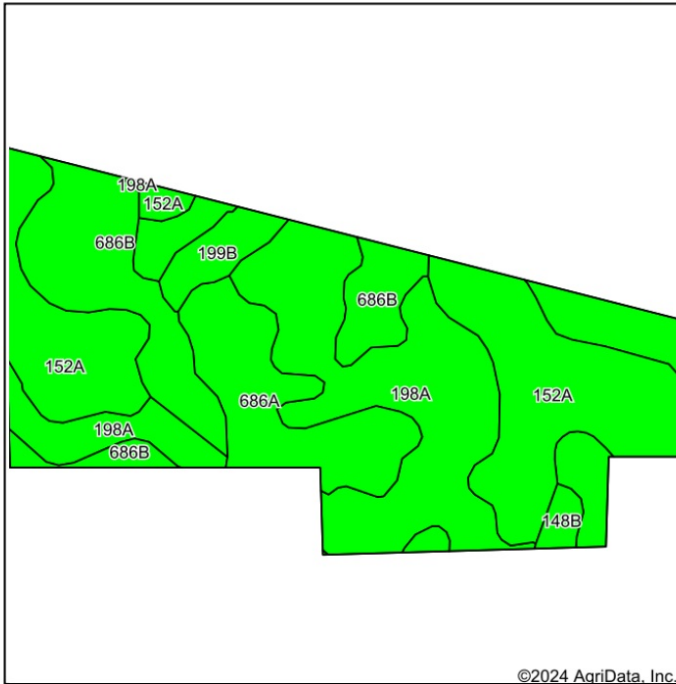
Asking Price:	\$15,000.00 per acre
Total Acres:	65.12 Acres
Tillable Acres:	63.81 FSA Acres
Taxes:	\$3,354.84



A great chance for that to add to your farming operation.
This highly productive Henry County, Illinois farm is open
for the 2024 crop season. Call today.



Soils Map



State: Illinois
 County: Henry
 Location: 23-17N-3E
 Township: Geneseo
 Acres: 64.23
 Date: 1/16/2024



Maps Provided By:



Soils data provided by USDA and NRCS.

©2024 AgriData, Inc.

Area Symbol: IL073, Soil Area Version: 20

Code	Soil Description	Acres	Percent of field	Il. State Productivity Index Legend	Subsoil rooting ^a	Corn Bu/A	Soybeans Bu/A	Crop productivity index for optimum management
198A	Elburn silt loam, 0 to 2 percent slopes	23.78	37.0%		FAV	197	61	143
**152A	Drummer silty clay loam, 0 to 2 percent slopes	18.31	28.5%		FAV	**195	**63	**144
**686B	Parkway silt loam, 2 to 5 percent slopes	11.54	18.0%		FAV	**184	**58	**137
686A	Parkway silt loam, 0 to 2 percent slopes	7.89	12.3%		FAV	186	59	138
**199B	Plano silt loam, 2 to 5 percent slopes	1.98	3.1%		FAV	**192	**59	**141
**148B	Proctor silt loam, 2 to 5 percent slopes	0.73	1.1%		FAV	**181	**57	**132
Weighted Average						192.4	60.7	141.4

Table: Optimum Crop Productivity Ratings for Illinois Soil EFOTG are sourced from Bulletin 811 calculated Map Unit Base Yield Indices, and adjusted (Adj) for slope, erosion, flooding, and surface texture. Publication Date: 02-08-2023

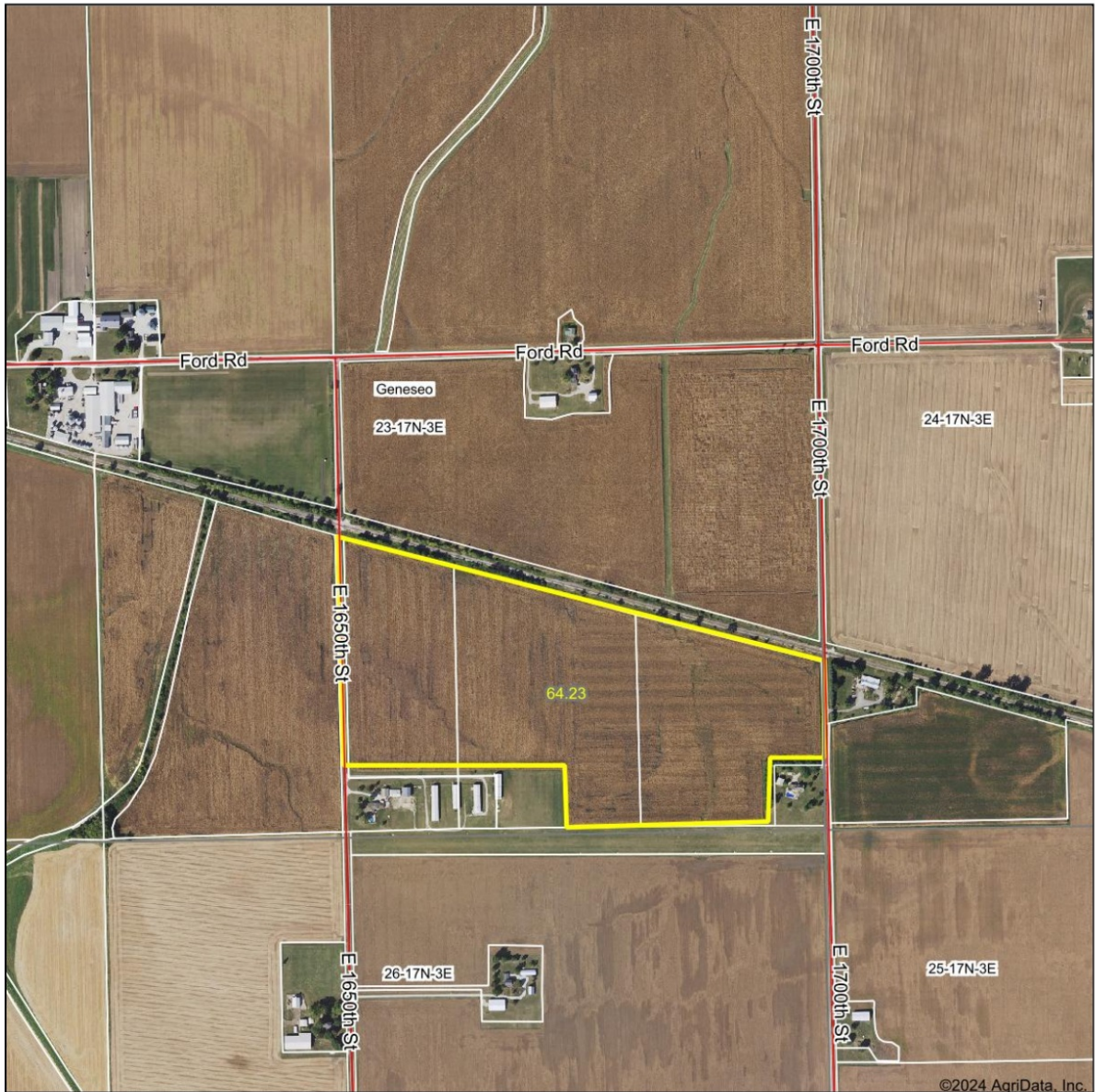
Crop yields and productivity (B811 EFOTG) are maintained at the following USDA web site: 2023 Illinois Soil Productivity and Yield Indices:

<https://efotg.sc.egov.usda.gov/#/state/IL/documents/section=2&folder=52809>

** Base indexes from Bulletin 811 adjusted for slope, erosion, flooding, and surface texture according to the Il. Soils EFOTG

Soils data provided by USDA and NRCS. Soils data provided by University of Illinois at Champaign-Urbana.

Aerial Map



©2024 AgriData, Inc.

HOLMSTROM
REALTY SERVICES
RESIDENTIAL & AGRICULTURAL
BROKERAGE • APPRAISALS • AUCTIONS

Maps Provided By:
surety
CUSTOMIZED ONLINE MAPPING
© AgriData, Inc. 2023 www.AgriDataInc.com

Boundary Center: 41° 26' 32.1, -90° 6' 36.27

23-17N-3E
Henry County
Illinois

0ft 857ft 1715ft



1/16/2024

Field borders provided by Farm Service Agency as of 5/21/2008.