



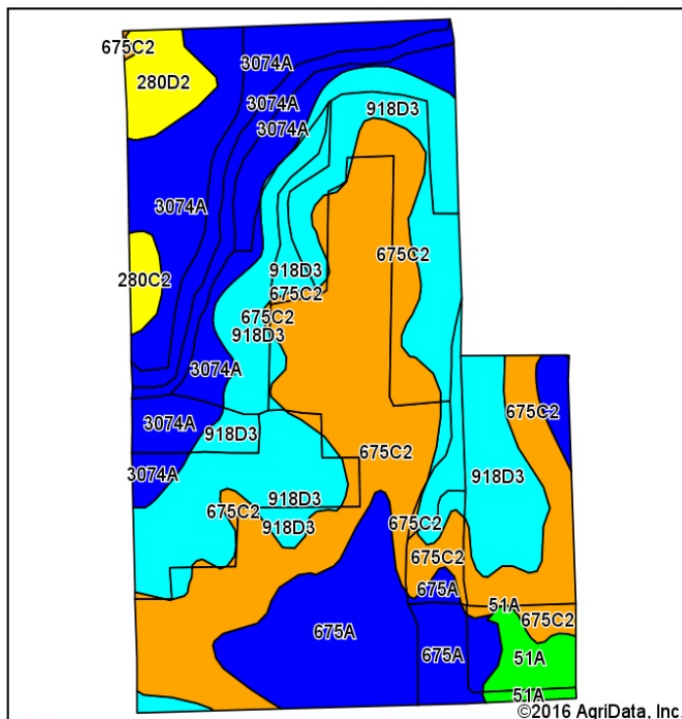
Roach Farm

93.00 Acres, more or less located in the Section 31 of Munson and Section 36 of Osco Township, Henry County, Illinois

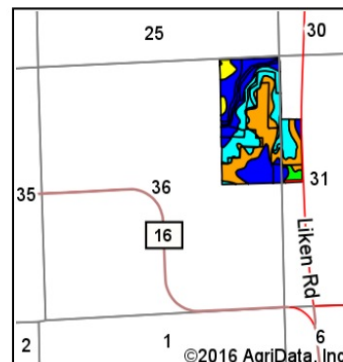
Asking Price:	\$793,000.00
Total Acres:	93.00 Acres
Tillable Acres:	88.70 FSA Acres
Taxes:	\$1,508.80

This farm is an excellent opportunity to add on to an existing operation or start your own farm. It has 93 acres with 88.70 considered cropland by the Farm Service Agency. Add to this an approximately 1,040 square foot home and four outbuildings and the possibilities are endless. Located close to Cambridge, IL. The lane is actually a County Road and snow is removed by the township. Call today for your appointment. (309) 944-6423

Soils Map



Soils data provided by USDA and NRCS.



State: **Illinois**
 County: **Henry**
 Location: **36-16N-2E**
 Township: **Osco**
 Acres: **94.13**
 Date: **6/20/2016**



Area Symbol: IL073, Soil Area Version: 11

Code	Soil Description	Acres	Percent of field	Il. State Productivity Index Legend	Subsoil rooting ^a	Corn Bu/A	Soybeans Bu/A	Crop productivity index for optimum management
**675C2	Greenbush silt loam, 5 to 10 percent slopes, eroded	28.36	30.1%		FAV	**171	**54	**125
**918D3	Marseilles-Atlas silty clay loams, 10 to 18 percent slopes, severely eroded	27.50	29.2%		UNF	**93	**32	**69
3074A	Radford silt loam, 0 to 2 percent slopes, frequently flooded	19.69	20.9%		FAV	186	58	136
675A	Greenbush silt loam, 0 to 2 percent slopes	12.91	13.7%		FAV	184	58	134
**280D2	Fayette silt loam, 10 to 18 percent slopes, eroded	2.55	2.7%		FAV	**149	**47	**109
51A	Muscatine silt loam, 0 to 2 percent slopes	2.15	2.3%		FAV	200	64	147
**280C2	Fayette silt loam, 5 to 10 percent slopes, eroded	0.97	1.0%		FAV	**155	**49	**113
Weighted Average						153	48.9	112.1

Area Symbol: IL073, Soil Area Version: 11

Table: Optimum Crop Productivity Ratings for Illinois Soil by K.R. Olson and J.M. Lang, Office of Research, ACES, University of Illinois at Champaign-Urbana. Version: 1/2/2012 Amended Table S2 B811

Crop yields and productivity indices for optimum management (B811) are maintained at the following NRES web site:

<https://www.ideals.illinois.edu/handle/2142/1027/>

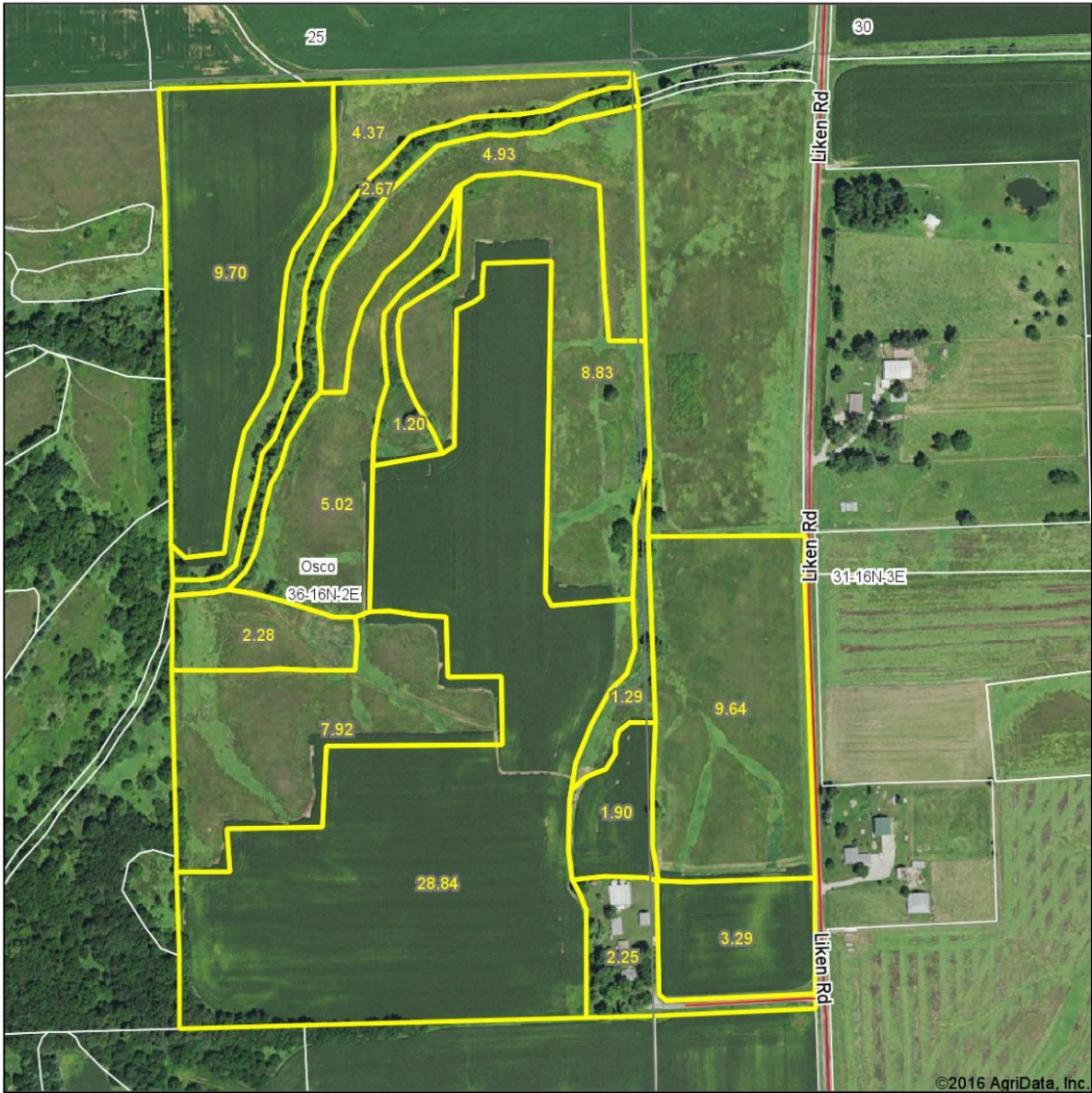
** Indexes adjusted for slope and erosion according to Bulletin 811 Table S3

^a UNF = unfavorable; FAV = favorable

Soils data provided by USDA and NRCS. Soils data provided by University of Illinois at Champaign-Urbana.

*c: Using Capabilities Class Dominant Condition Aggregation Method

Aerial Map



map center: 41° 20' 8.72, 90° 12' 14.46

0ft 436ft 873ft

Maps Provided By:

 CUSTOMIZED ONLINE MAPPING
 © AgriData, Inc. 2016 www.AgriDataInc.com

36-16N-2E
Henry County
Illinois



6/20/2016

Field borders provided by Farm Service Agency as of 5/21/2008. Soils data provided by University of Illinois at Champaign-Urbana.







